

Eglin Air Force Base, Florida

2014 - 2015 Outdoor Recreation, Hunting and Freshwater Fishing Map

Other Map Features

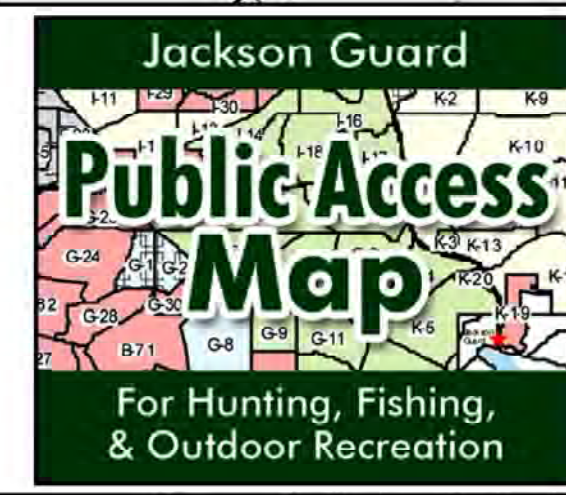
- Road
- Stream
- Powerline
- Range Gate
- Florida National Scenic Trail
- Florida National Scenic Trail Trailhead
- Camping Areas
See attached camping regulations
- Game Check Station
1 - Jackson Unit Check Station
2 - Brier Creek Check Station
- Designated Parking Areas
See attached Santa Rosa Island regulations
- Permit Sales Office
- Closed Road
- Pond
- Reservation Boundary
- Hospital
- Dove Field
- Timberlake Bike Trail Area
- Hurlbur/Eglin Skeet Range
- Bird Dog Training Area
- Choctaw Bowman Archery Range
- Emergency 911 Call Box

Legend

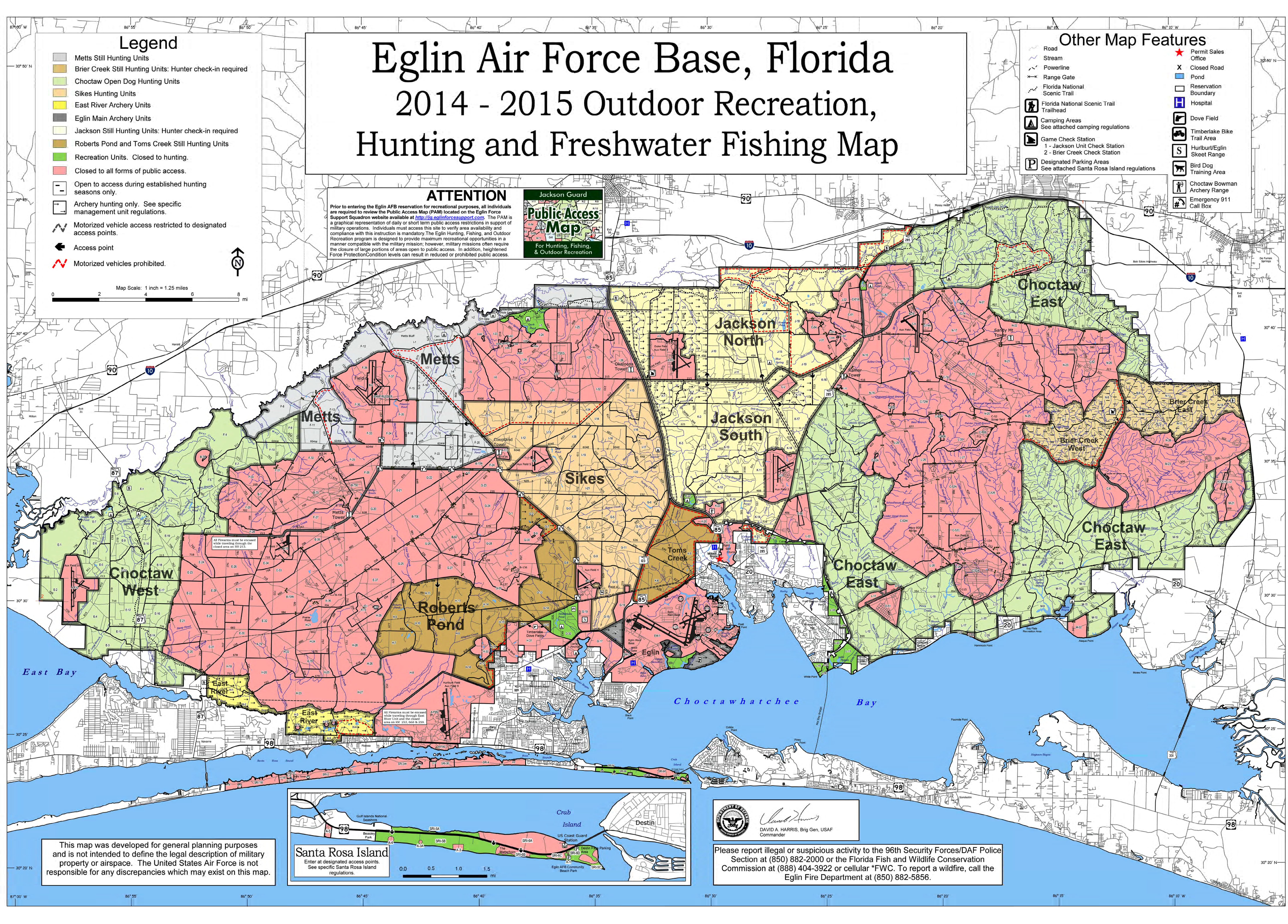
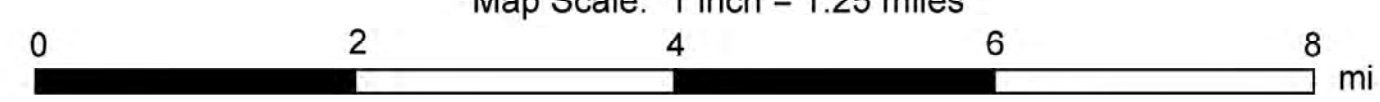
- Metts Still Hunting Units
- Brier Creek Still Hunting Units: Hunter check-in required
- Choctaw Open Dog Hunting Units
- Sikes Hunting Units
- East River Archery Units
- Eglin Main Archery Units
- Jackson Still Hunting Units: Hunter check-in required
- Roberts Pond and Toms Creek Still Hunting Units
- Recreation Units. Closed to hunting.
- Closed to all forms of public access.
- Open to access during established hunting seasons only.
- Archery hunting only. See specific management unit regulations.
- Motorized vehicle access restricted to designated access points.
- Access point
- Motorized vehicles prohibited.

ATTENTION

Prior to entering the Eglin AFB reservation for recreational purposes, all individuals are required to review the Public Access Map (PAM) located on the Eglin Force Support Squadron website available at <http://eglinforssupport.com>. The PAM is a graphical representation of daily or short term public access restrictions in support of military operations. Individuals must access this site to verify area availability and compliance with this instruction. The Eglin Hunting, Fishing, and Outdoor Recreation program is designed to provide maximum recreational opportunities in a manner compatible with the military mission; however, military missions often require the closure of large portions of areas open to public access. In addition, heightened Force Protection/Condition levels can result in reduced or prohibited public access.



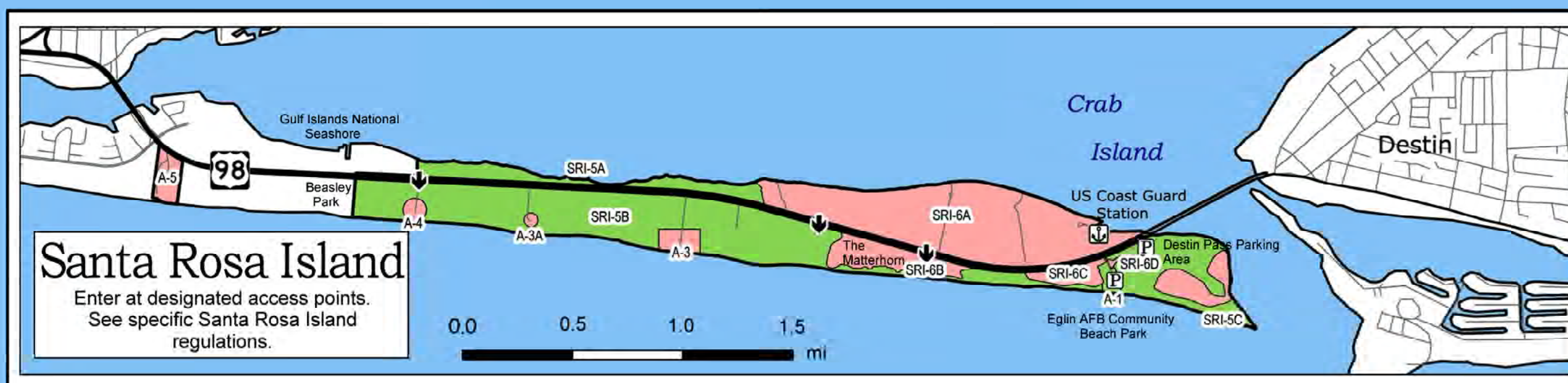
Map Scale: 1 inch = 1.25 miles



All Firearms must be enclosed while traveling through the closed area on SR 213.

All Firearms must be enclosed while traveling through East River Unit and the closed area on SR 253, 643 & 259.

This map was developed for general planning purposes and is not intended to define the legal description of military property or airspace. The United States Air Force is not responsible for any discrepancies which may exist on this map.



DAVID A. HARRIS, Brig Gen, USAF
Commander

Please report illegal or suspicious activity to the 96th Security Forces/DAF Police Section at (850) 882-2000 or the Florida Fish and Wildlife Conservation Commission at (888) 404-3922 or cellular *FWC. To report a wildfire, call the Eglin Fire Department at (850) 882-5856.